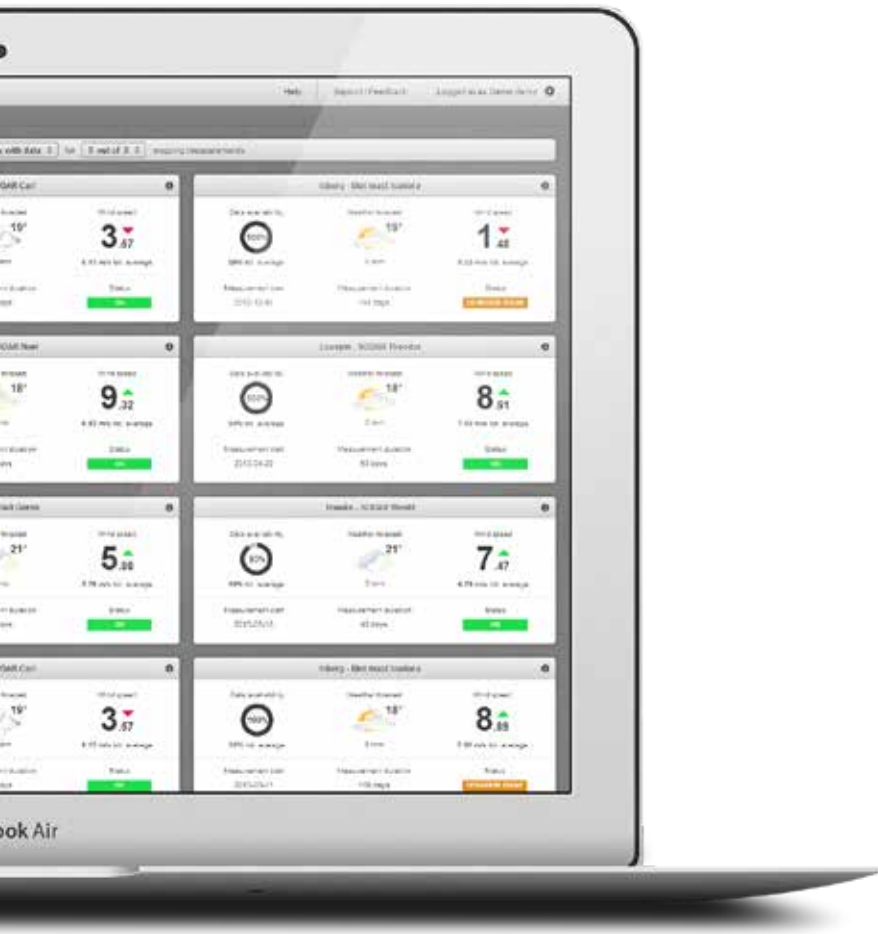


A man wearing a yellow hard hat with a headlamp and safety glasses is looking out from the nacelle of a wind turbine. The background shows a vast landscape with other wind turbines under a blue sky. The entire image has a blue color overlay.

Do you rely on accurate data from your  
wind measurement campaigns?

We should talk.

**breeze** development



## We have the solution to get your project funded

A proven, strong and consistent wind resource is key to successful wind farm development.

Breeze is the leading software for professional developers to prove wind power project viability during measurement campaigns. Increased data quality, error detection and real-time monitoring makes your projects more reliable, efficient and easier to fund.

This is how it works...



Met Mast

LIDAR

SODAR

**breeze**



Wind resource expert

Daily quality control, data visualization for failure analysis and streamlined workflow

Consultant

Wind data access to create production estimate reports



Project Managers

Powerful reporting tools, file management, project overview



Management

Cost savings through efficiency, portfolio overview and project prioritization, trusted work method



Development partner

Project insight through access to real-time data and information assets

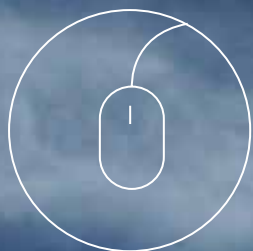


Funding partner

Wind portfolio reports and reliable data to base investment decision



# How to get started



## Try our free demo

Try out our free demo to find out what Breeze can do for you.



## Sign up for a trial

Sign up for a one month trial period with your own data.



## Joint evaluation

After the trial period we have an evaluation together



## Keep on rollin'

If all is well, keep on going for as long as you wish.

Easy fee structure for project budget allocation. Each measurement unit that is active in Breeze is associated with a subscription fee. For installation we need regular data updates preferably daily files from the wind measurement equipment and deployment documentation from the site so that we can interpret the data files.

# One size fits all

## For small developers

- Breeze is a mark of quality towards investors
- All data is safely stored and all activities fully traceable
- Save money through automated work flows
- Generate professional reports in minutes
- Share access to real time wind data with development partners

## For large developers

- Maximize ROI with increased efficiency and wind data quality
- Compatible with all types of measurement equipment
- Portfolio overview for key employees
- Coherent workflow for maximum efficiency and data quality
- Structure brings reduced staff dependency
- All reports in same format

## The wind measurement process

1 — — → 2 — — → 3 — — → 4 — — → 5

1-2 year wind measurement

Daily wind data quality control

Reporting to key stake holders

Production estimate

Get funded

# The bread and butter...

## Easy to use

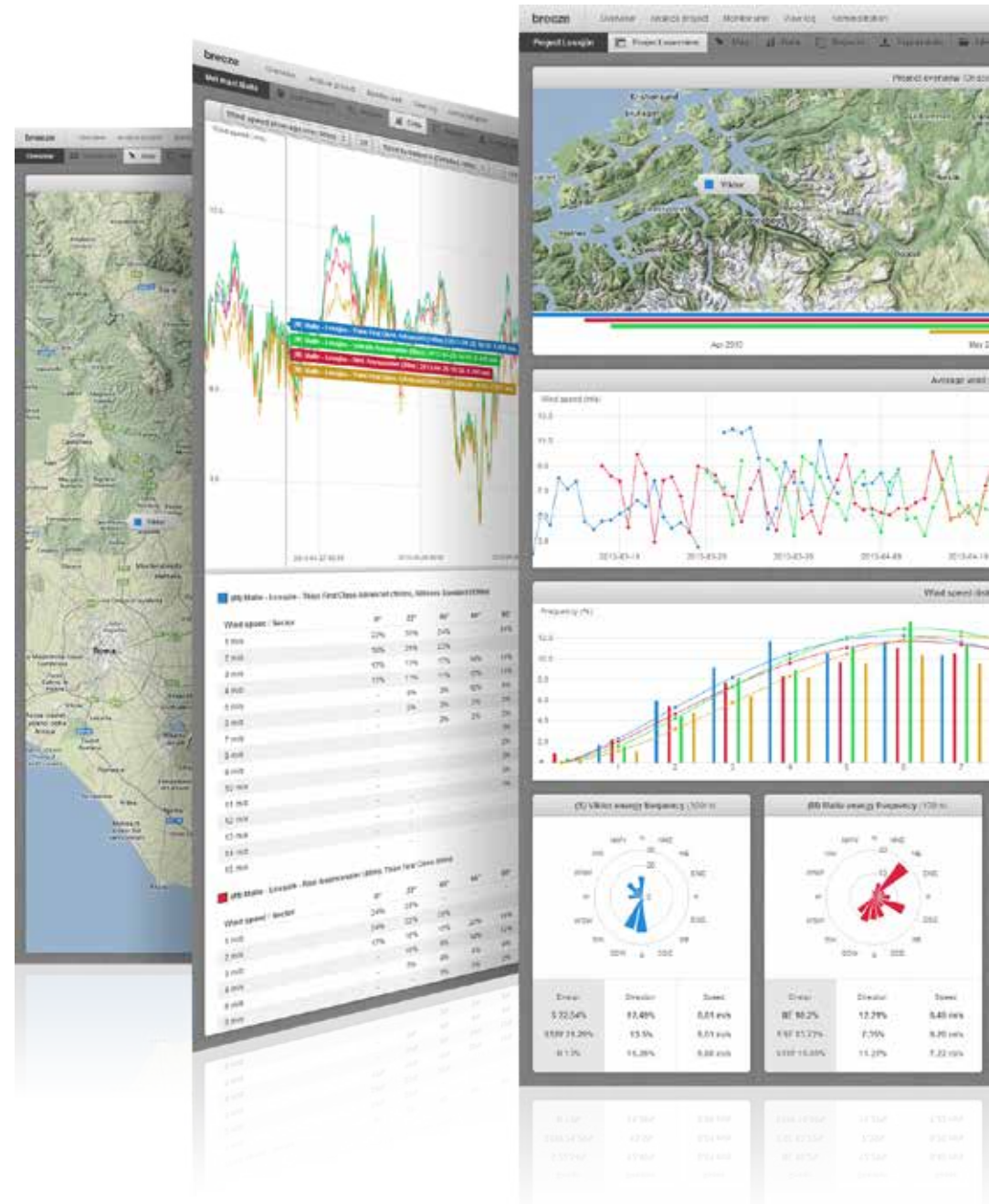
To get started is quick and easy. The user interface invites you to use all features with little to no training.

## Increased wind data quality

Errors are detected instantly by automatic quality assurance filters. Powerful views for quality assurance allow for frequent and efficient manual control.

## A system with many friends

Breeze is compatible with all market leading suppliers of wind measurement equipment: met mast, LIDAR and SODAR. Get the same workflow for data quality assurance and reporting regardless of supplier.





...of wind power data

Overview with a new perspective

The intuitive interface allows you to always know the exact status of your entire wind portfolio from both a managers and technical perspective.

Must have professional reports

Customize wind data reports in a matter of minutes. Key information is distributed in professional reports to partners, investors, land-owners and colleagues. Login or share logins to Breeze for a real time data room for all your wind assets.

A powerful tool

With Breeze all is harmonized. Your team can spend less time on mundane activities and more time on valuable analysis and risk reduction.



# Customer case - E.ON

E.ON is one of the world's largest investor-owned power and gas companies. E.ON is on track to invest billions of Euro in wind power in the coming 5 years.

To invest in the most profitable wind power projects E.ON perform extensive wind measurement activities worldwide. A deep knowledge about the wind resource is a way to reduce risk and invest in the most profitable projects.



In 2012 E.ON placed headquarters for onshore wind power in Malmö, Sweden. In line with a centralized organization for wind power development E.ON chose Breeze to manage wind data in a centralized platform. Processes, knowledge sharing and structure relating to wind data is now streamlined in the Breeze platform.

We work in a global organization in which cooperation and knowledge sharing is key to our success, says Adil Morina of E.ON. With Breeze we speed up learning processes and wind know-how with faster feedback through instant access to data.

With Breeze multi-vendor approach E.ON can use streamlined processes for data management and reporting from met towers, SODAR and LIDAR equipment

Adil continues, using smart and modern tools to make the organization more efficient is in line with our thinking of continuous improvement and openness to new technology.







Using smart and modern tools for increased efficiency is in line with our thinking of continuous improvement and openness to new tech.

ADIL MORINA, E.ON





## Word from the CEO

Electricity production from renewable energy is experiencing massive growth. Beyond growth, there exists a big upside in understanding the underlying often very volatile fuels and how they affect production levels and financial yield metrics.

We have seen production increases that have been realized after understanding how production assets perform in different weather conditions and tuning them accordingly. This of course requires IT systems that provide useful metrics - that is what we do.

To reach increases in production level is a good thing for many stake holders:

1. Consumers get cheaper electricity
2. Owners get increased return on investment. Increased production levels have an almost direct impact on the bottom line.
3. The world gets cleaner electricity production

At Greenbyte we find that creating products to provide insights that generate so much positive influence is an incredibly rewarding endeavour.

**JONAS CORNÉ, CEO OF GREENBYTE**





"Breeze solves the biggest problem in the industry!"

FRANK SPENCER, CEO OF EMERGENT ENERGY

Want a demo?

[www.breezesystem.com/development](http://www.breezesystem.com/development)

