



# Breeze Development

WIND RESOURCE MONITORING SYSTEM

Modern software for wind site evaluation and management.



**MONITOR**

Monitor all projects, units and sensors in one system.



**ANALYZE**

Analyze project viability & equipment performance.



**REPORT**

Automatically create customizable reports.



**EXPORT**

Export measurement data to other applications.



**COLLABORATE**

Invite third parties to collaborate on projects.

# Lower Uncertainty by Improving Data Quality

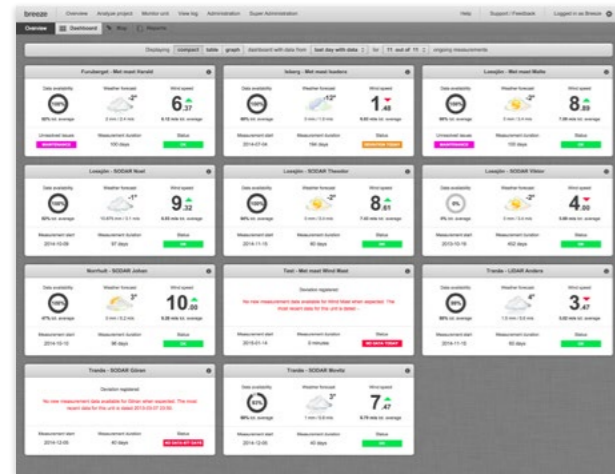
High quality wind data is the foundation for all wind energy projects. If not managed adequately, the available data may not be of sufficient quality before the more sophisticated analysis begins. Breeze software system increases efficiencies by automating wind monitoring tasks and providing quality data and supporting documentation to the wind analyst.



*We work in a global organization in which cooperation and knowledge sharing is key to our success. Using smart and modern software for increased efficiency is in line with our thinking of continuous improvement and openness to new tech. Breeze speeds up our learning processes and wind know-how with faster feedback loops through instant access to data.*

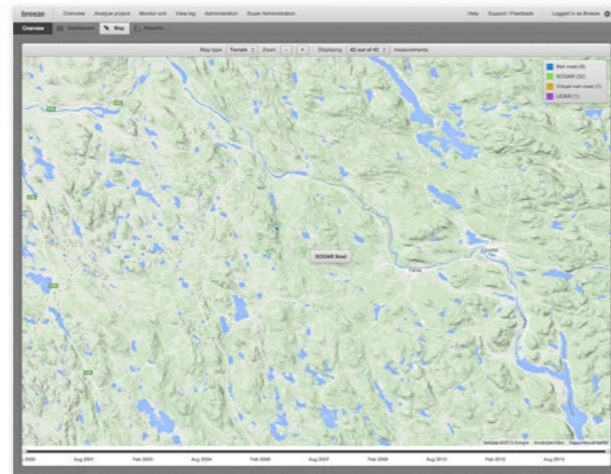


ADIL MORINA  
SOFTWARE ENGINEER, E.ON



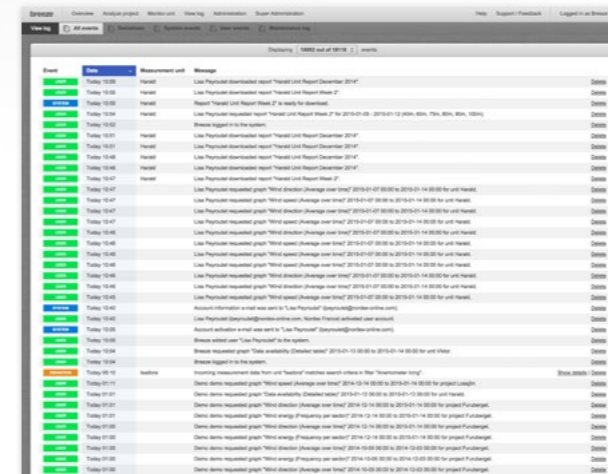
Monitor Portfolio

The monitor portfolio dashboard displays maintenance, data availability, weather and status.



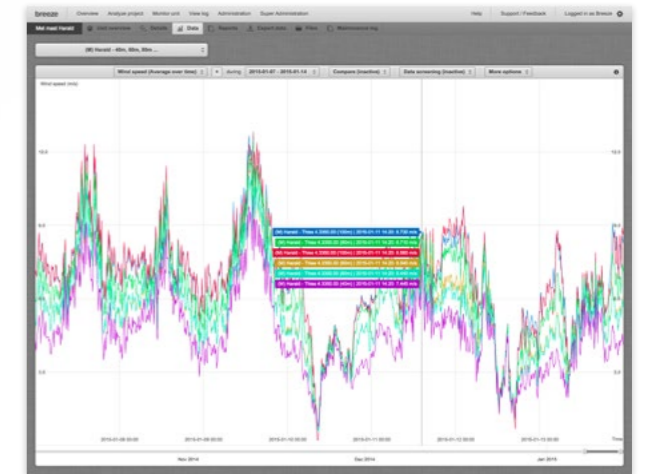
Geographical Overview

Geographical overview of sites with detailed information and terrain map view.



Automatic Quality Assurance

Customizable filters to detect missing data, icing events, sensor anomalies and low batteries.



Data Studio

Use the data studio for site comparisons, erroneous data screening and custom visualizations of any data.

## Value Provided by Breeze Development

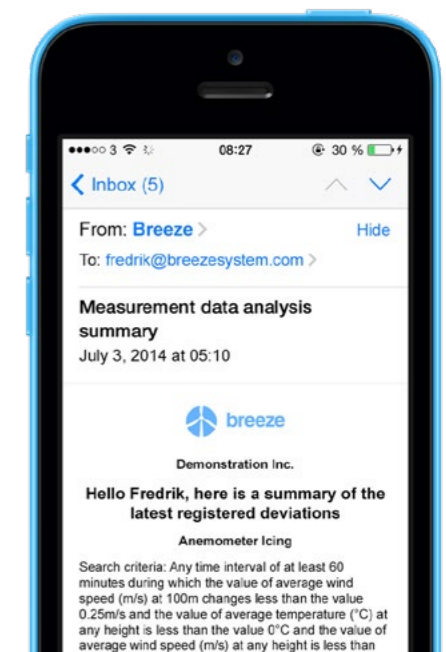
- ✓ Improve organization through centralizing wind data and documentation
- ✓ Increase data availability rates through automatic filter checks to detect problems faster
- ✓ Future proof, no technology lock-in
- ✓ Easy access via web browser
- ✓ Works with all leading providers of data loggers, LIDAR and SODAR
- ✓ Proven time savings
- ✓ Automatic preparation of professional reports
- ✓ Store all reports, maintenance logs and documentation in one place

## Be alerted to Problems Faster

Breeze informs the user if anything is wrong with the measurement data and if actions need to be taken.

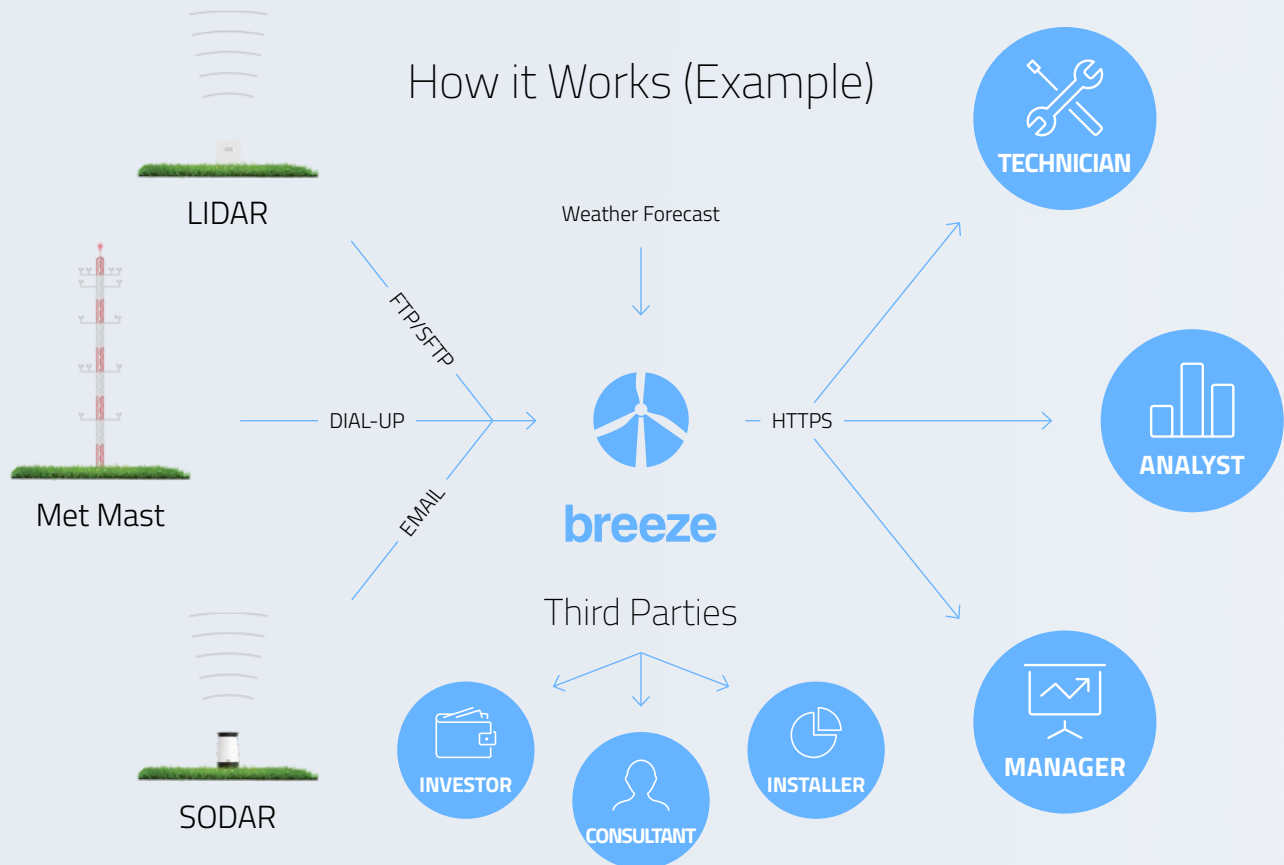
Problems will no longer wait days for detection.

Be notified of errors directly, customize who receives notifications and when. Subscribe to reports sent via email to read on your mobile, PC or laptop.



## Ten Reasons to Try Breeze

- ✓ Used globally and compatible with any device
- ✓ Scalable from a single project to large portfolios
- ✓ User friendly dashboards and graphics
- ✓ Automatic notifications via email and automatic weekly/monthly report generator
- ✓ Offers long term storage of active and inactive measurement unit data
- ✓ Distribute access to with third parties such as investors and consultants
- ✓ Export data to other programs for further analysis
- ✓ Secure infrastructure hosted by Amazon
- ✓ More reliable and scalable than Excel and other dated tools
- ✓ Easy to implement, modern software as a service



## Get Started With Breeze

Contact us for a quick demo of Breeze or a trial with your own measurement data.

[www.breezesystem.com](http://www.breezesystem.com) |



**SARTELCO® SISTEMI SRL**  
 Via Torri Bianche, 1  
 20871 Vimercate (MB)  
 Tel. +39- 039- 62905.1 Fax. +39- 039- 62905.99  
 e-mail [sistemi@sartelco.it](mailto:sistemi@sartelco.it) Web [www.sartelco.it](http://www.sartelco.it)