

SATELLINE® -M3-R3

Wireless World – Local Solution

SATELLINE-M3-R3 is a UHF data receiver module in a lightweight single PCB structure. It is designed to be integrated into a host device, for instance land surveying rover for receiving GNSS correction data.

SATELLINE-M3-R3 is equipped with all necessary features; such as 70 MHz tuning range (403...473 MHz) in one hardware, selectable channel width and low power consumption. The configuration of the radio module can be made by using the SATEL SL-commands or SATEL Configuration Manager -software.

SATELLINE-M3-R3 is compatible with widely used SATELLINE-3AS and -EASy radio modems and also with other manufacturers' radio protocols.

VHF with NMS

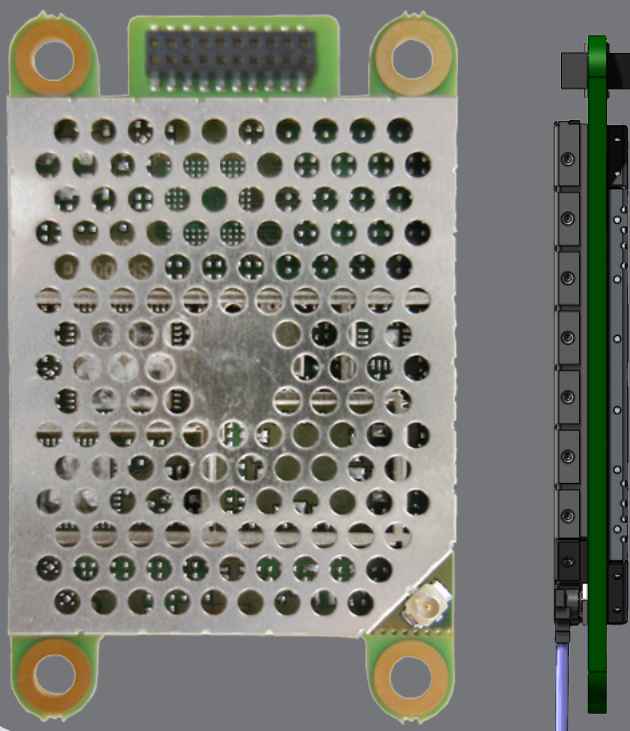
UHF with NMS

UHF

Licence Free

IP67

Customer Specific



With SATEL radio modems, setting up a local data transfer network is quick and cost effective. Your wireless network is independent and free of operator services. The cost of operation is either free of charge or fixed, depending on the frequency used. SATELLINE radio modems are type-approved in over 50 countries.

For the latest information, please visit our website www.satel.com.

SATELLINE radio modems are always on line and provide reliable, real-time data communications over distances ranging from tens of metres up to around 80 kilometres.



SATEL® Customer Specific Radio Modems

In order to make the SATELLINE-M3-R3 module the most suitable unit for different user cases, it is designed to be a flexible product. Following items can be customized:

- Shape of the PCB
- Mechanical fastening and its type
- Interface and antenna connector types

Please contact us to learn more about customization.

To offer the user more flexibility, the M3-R3 is compatible with the widely used SATELLINE-3AS and -EASy radio modems and can also be added in to systems based on other manufacturers' radio protocols.

The channel bandwidths 12.5 and 25 kHz are software selectable. In order to offer easy logistic to customers the SATELLINE-M3-R3 has a wide 70 MHz tuning range. End-users can select the operation frequency within the range of 403...473 MHz.

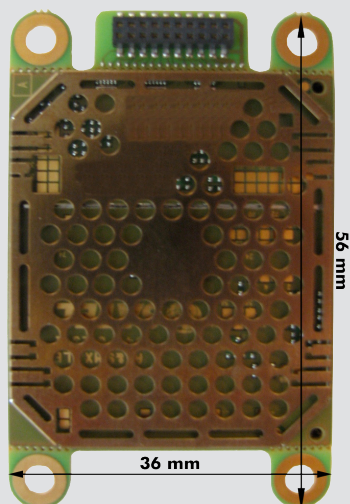
SATELLINE-M3-R3 is supplied without a housing in PCB format with RF-shielding, facilitating installation in to the customer's own housing or into a host device.

TECHNICAL SPECIFICATIONS

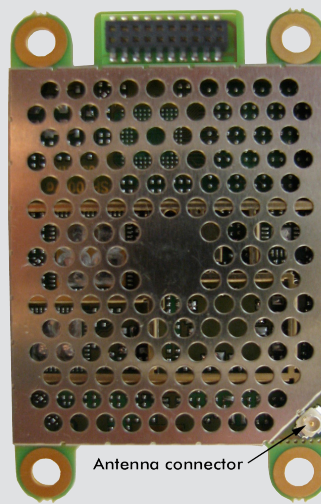
SATELLINE-M3-R3 complies with the following international standards: EN 300 113-1, EN 301 489-1,-5, EN 60950 and FCC CFR47 Part 15

RECEIVER MODULE	
Frequency Range	403 ... 473 MHz
Tuning Range	70 MHz
Channel Bandwidth	12.5 / 25 kHz, software derived
Frequency Control	Synthesized 6.25 kHz tuning resolution
Modulation	4FSK , GMSK
Sensitivity BER < 10E-3	> -114 dBm
DATA MODEM	
Serial Interface	CMOS-UART
Interface Connector	1.27 mm pitch socket
Data Speed of Radio Interface	19200 bps (25 kHz channel) 9600 bps (12.5 kHz channel) 4800 bps (6.25 kHz channel)
GENERAL	
Operating Voltage	+4 Vdc
Power Consumption, Typical	0.5 W (Receive)
Temperature Range	-25 °C ... +55 °C (complies with the standards) -30 °C ... +70 °C functional -40 °C ... +80 °C storage
Antenna Connector	HIROSE U.FL (Adapter cables available for TNC, SMA, MCX, MMCX etc.)
Construction	PCB with RF-shielding
Size H x W x D mm	56 x 36 x 6 mm (w screw fasteners) 43 x 36 x 6 mm (w/o screw fastening)
Weight	18 g

Values are subject to change without notice.



Default shape



Antenna connector type U.FL

Manufacturer:



SATEL Oy
Meriniitynkatu 17, P.O.Box 142,
FI-24101 Salo, Finland

Tel. +358 2 777 7800
Fax +358 2 777 7810

info@satel.com
www.satel.com

Distributor:

Sartelco® Sistemi SRL
via Torri Bianche, 1
20871 Vimercate (MB) - Italy
sistemi@sartelco.it
www.sartelco.it
Tel. +39-039-62905.1
Fax. +39-039-62905.99