

# Digi TransPort<sup>®</sup> DR

Branch-in-a-Box Enterprise Class Cellular Routers

Cellular routers with integrated DSL and Wi-Fi provide advanced routing/security for all-in-one primary and backup connectivity to remote locations and devices.



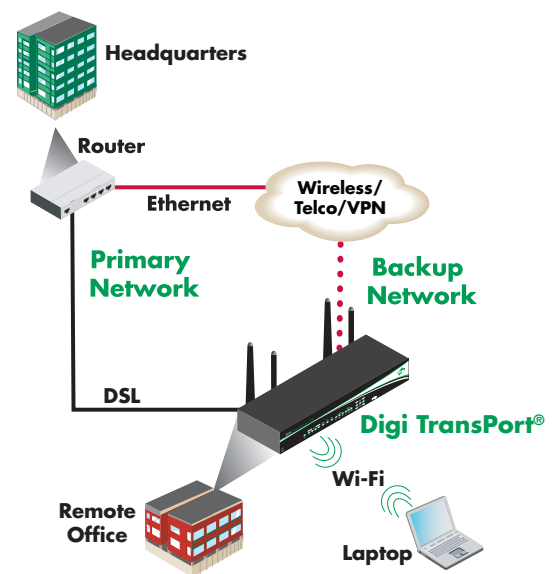
## Overview

Digi TransPort DR cellular routers provide secure high speed wireless connectivity to remote sites and devices for primary or backup wireless broadband network connectivity. These multifunction cellular routers feature a flexible design with a variety of configuration options, including multiple serial ports (async or sync) or Wi-Fi modules, in addition to standard features like USB, serial and Ethernet.

The Digi TransPort DR offers true advanced routing, firewall and security features including stateful firewall inspection and VPN. Enterprise-class protocols incorporate BGP, OSPF and VRRP+, a patented technology built upon the popular VRRP failover standard providing true auto sensing, auto failure and auto recovery of any line drop.

Most notably, the Digi TransPort DR features a built-in DSL modem for primary connectivity to remote sites, with failover to cellular or optional PSTN for maximum network uptime. Integrated 802.11b/g Wi-Fi is also available.

## Application Highlight



## Features/Benefits

- Enterprise class cellular routers with advanced dynamic routing, security and firewall features
- High speed cellular interfaces: GSM EDGE, HSPA, HSPA+ and CDMA EV-DO
- Branch-in-a-box focus with available DSL to cellular failover
- Synchronous protocol support for legacy retail/financial devices
- Flexible interfaces including serial (async/sync), Wi-Fi and USB
- Powerful integrated end user programming

## Related Products



VPN Concentrators



Digi Remote Management



Accessories



# Specifications

# Digi TransPort® DR

## Interfaces

### Serial

Async Port Type	6 RJ-45 RS-422/X.21 (option); Varies by model type
Sync Port Type	1 Sync/Async DB-25 RS-232, 2 Sync/Async DB-25 RS-232; Varies by model type
Signal Support	TXD, RXD, RTS, CTS, DTR, DSR, DCD, RI (No DSR/RI for RJ-45)
Flow Control	Software (XON/XOFF), Hardware (RTS/CTS)
COM Port Redirector	Digi patented RealPort®

### Ethernet

Ports	4-port auto switch with auto MDI/MDX option
Specifications	IEEE 802.3 10/100 Base-T (auto-sensing) Full or Half duplex

### Cellular Interfaces

GSM EDGE/HSPA/HSPA+	Yes
EV-DO	Yes
HSPA/UMTS	Yes

### Other Interfaces

PSTN	PSTN V.92 fast train modem RJ-11
ADSL	ADSL, ADSL2, ADSL2+, ADSL2++, (quad spectrum downstream/double upstream), T1.413, TR-048, UR-2 compliant
Wi-Fi (Option)	802.11b/g; WPA/WPA2, Open or shared key authentication; WEP (64 and 128 bit) encryption; WPA/WPA2 authentication (pre-shared keys) with TKIP and AES encryption
USB Host Port	2 Type A connectors for expansion

### General Features

Status LEDs	Ethernet, Power on, Cellular link/Activity, Signal strength
Other	SIM removal protection (option); 2 50 ohm SMA male antenna; DIN rail and wall mounting options; Modbus TCP
Security/VPN	RADIUS, TACACS+, SSL, SSLv2, SSLv3, FIPS 197, L2TP, (20 tunnels included - 50 max.); IPSec with IKEv1, IKEv2, ISAKMP; DES, 3DES and AES up to 256-bit encryption; Simple Certificate Enrollment Protocol (SCEP) for X.509 certificates, Open VPN client and server, PPTP; IPSec/PPP/L2TP VPN Server support; IP pass-through; Content Filtering (via 3rd party)
Router/Firewall	NAT/NAT-Traversal, NAPT forwarding; IP Routing Protocols: PPP, GRE, RIP (v1 & v2), OSPF, SRI, BGP; IP Failover: VRRP, VRRP+™; VLAN support; Stateful inspection firewall with scripting; Access control lists; Modbus over UDP/TCP; DHCP; SNAIP; Dynamic DNS client compatible with BIND9/No-IP/DynDNS; Automatic failover/failback to second GSM network/Standby APN; Optional IPv6
Sync/Specialty	Sync tunneling: LAPB, RAW SNA; X.25/X.28; TPAD, APACS30, X.25, X.28, PAD, X.29, X.31, X.21, XOT, Datawire VXN™, SSL
Management	HTTP, HTTPS, FTP, SFTP, SSL, SMTP, SNMP (v1/v2c/v3), SSH, Telnet and CLI for web management; Remote management via software tool (option); SMS management, protocol analyzer and ability to capture PCAP files for use with Wireshark
Local Programming	Custom scripting development platforms (Python)
Dimensions (L x W x H)	5.9 in x 9.4 in x 1.4 in* (15 cm x 24 cm x 3.5 cm), *Height of DR6460/DR6420 models is 1.9 in (4.7 cm)
Weight	2.0 lb (0.9 kg)

# Specifications

# Digi TransPort® DR

## RF Features

### GSM Models

HSUPA/UMTS	Tri-band 850/1900/2100 MHz with Rx diversity
HSPA+	850/900/1900/2100 MHz with Rx diversity
Antenna	2 X 50 Ω SMA male antennas

### CDMA Models

EV-DO Rev A	Dualband 800/1900 MHz with Rx diversity
Antenna	2 x 50 Ω SMA male antennas

## Power Requirements

Power Input	12 VDC
Power Supply	Supplied with universal 100-240VAC 50/60 Hz plug-top mains adaptor
Power Consumption	Typical: 6.0W, Max: 10.0W

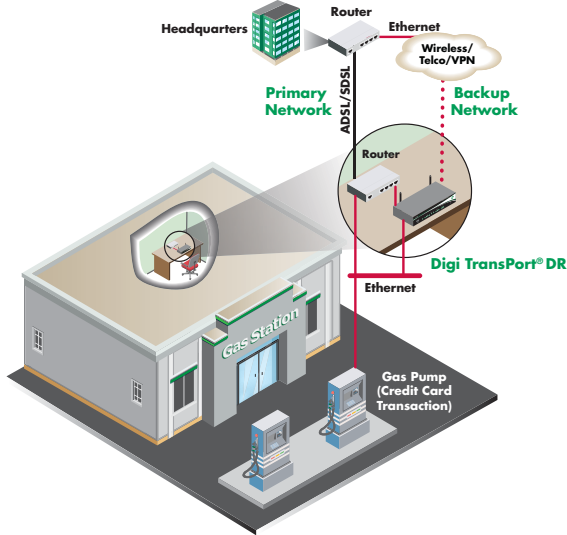
## Environmental

Operating Temperature	-20° C to +55° C -25° C to +70° C with reduced cellular performance
Relative Humidity	20% to 95% (non-condensing)
Ethernet Isolation	1.5 kV
Serial Port Protection (ESD)	15 kV

## Approvals

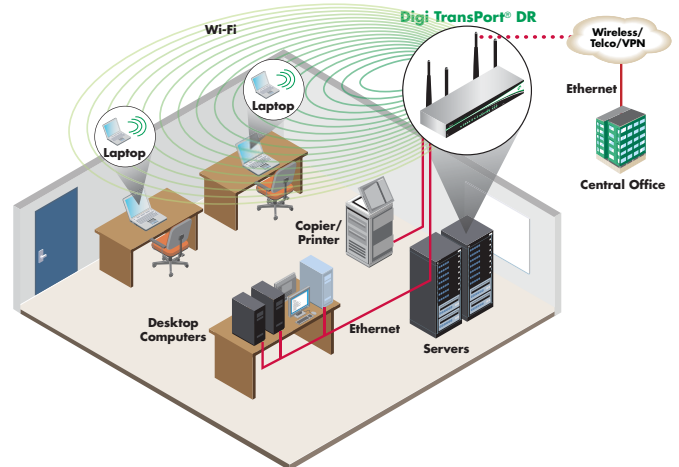
Mobile Certifications - GSM/UMTS	PTCRB, NAPRD.03, GCF-CC, R&TTE, EN 301 511
Mobile Certifications - CDMA/EV-DO	CDG TIA/EIA-690, CDG TIA/EIA-98-E
Wireless Carrier Certifications	Certified by most major carriers. See <a href="http://www.digi.com">www.digi.com</a> for current listing.
Safety	UL 60950, CSA 22.2 No. 60950, EN60950
Emissions/Immunity	CE, FCC Part 15 Class A (FCC identifier GGL-R1902G), AS/NZS CISPR 22, EN55024, EN55022 Class B

## Enterprise Class Routers



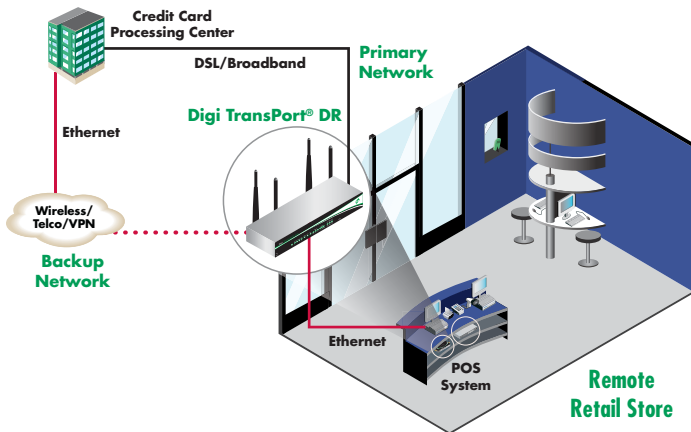
Advanced routing, security and firewall features for enterprise connectivity to remote sites and devices.

## Branch-in-a-Box



Multi-purpose routers with integrated backup options provide both primary and failover routing interfaces and protocols for seamless connectivity during network outages.

## Specialty Protocols



Specialized support for POS/synchronous protocols, enabling transparent integration across cellular networks.

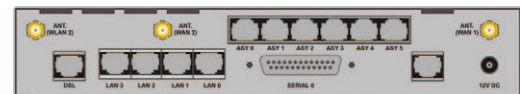
## DR Models



4-Port Ethernet Switch, 1 Sync/Async Serial DB-25, Wi-Fi (optional)



4-Port Ethernet Switch, 2 Sync/Async Serial DB-25, Wi-Fi (optional)



4-Port Ethernet Switch, 6 Async Serial RJ-45, Wi-Fi (optional)

Visit [www.digi.com](http://www.digi.com) for part numbers.

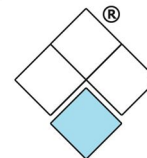
**DIGI SERVICE AND SUPPORT** - You can purchase with confidence knowing that Digi is here to support you with expert technical support and a strong five-year warranty. [www.digi.com/support](http://www.digi.com/support)

### Digi International

877-912-3444  
952-912-3444  
[info@digi.com](mailto:info@digi.com)

### © 2008-2011 Digi International Inc.

Digi, Digi International, the Digi logo, the Making Wireless M2M Easy logo, Digi TransPort and RealPort are trademarks or registered trademarks of Digi International Inc. in the United States and other countries worldwide. All other trademarks are the property of their respective owners. All information provided is subject to change without notice.



### SARTELCO® SISTEMI SRL

Via Torri Bianche, 1  
20871 Vimercate (MB)  
Tel. +39-039-62905.1 Fax.  
+39-039-62905.99

[info@sartelco.it](mailto:info@sartelco.it)  
[ordini/promozioni@sartelco.it](mailto:ordini/promozioni@sartelco.it)  
[amministrazione@sartelco.it](mailto:amministrazione@sartelco.it)

[www.sartelco.it](http://www.sartelco.it)